


# Expert eConsult routing and curation service

Our team can manage the entire process of routing and eConsult curation, so PCPs can do what they do best  care for patients.



## How it works



### Provider

Referral request is entered in EHR  
Referral is assigned to AristaMD



### AristaMD Referral Navigation Nurse (RNN)

Our nurse decides whether an eConsult is needed based on proven standard criteria

If **yes**, the nurse gathers the necessary information, lab results, and images, and then requests an eConsult

Specialist reviews and completes eConsult



### Provider

PCP is alerted within their EHR when the consult is ready for them

PCP clicks on a link within the alert to view the final report

PCP may ask the specialist questions if anything is unclear, and then close out the consult



### Health Dept/AristaMD Nurse

The final report is added to the patient record within the EHR

eConsults are back in 24 hours, however, most are back within 4-6 hours, ensuring little to no delay in patient care.

### Referral Navigation Nurses

All of our Referral Navigation Nurses are certified RNs with clinical and technical expertise.

With access to provider EHRs, our RNNs reference the relevant clinical workup checklist to take information from the patient record to develop an eConsult.

Our RNNs send the eConsult to the specialist and let the PCP know when the eConsult has been returned.

RNNs handle all information transfers between EHRs, so ordering eConsults can be done without any additional work from the PCP.

The process is efficient and consistent.



For more information or to request a demo, contact us at [info@aristamd.com](mailto:info@aristamd.com) or visit us at [www.aristamd.com](http://www.aristamd.com).

# Clinical routing

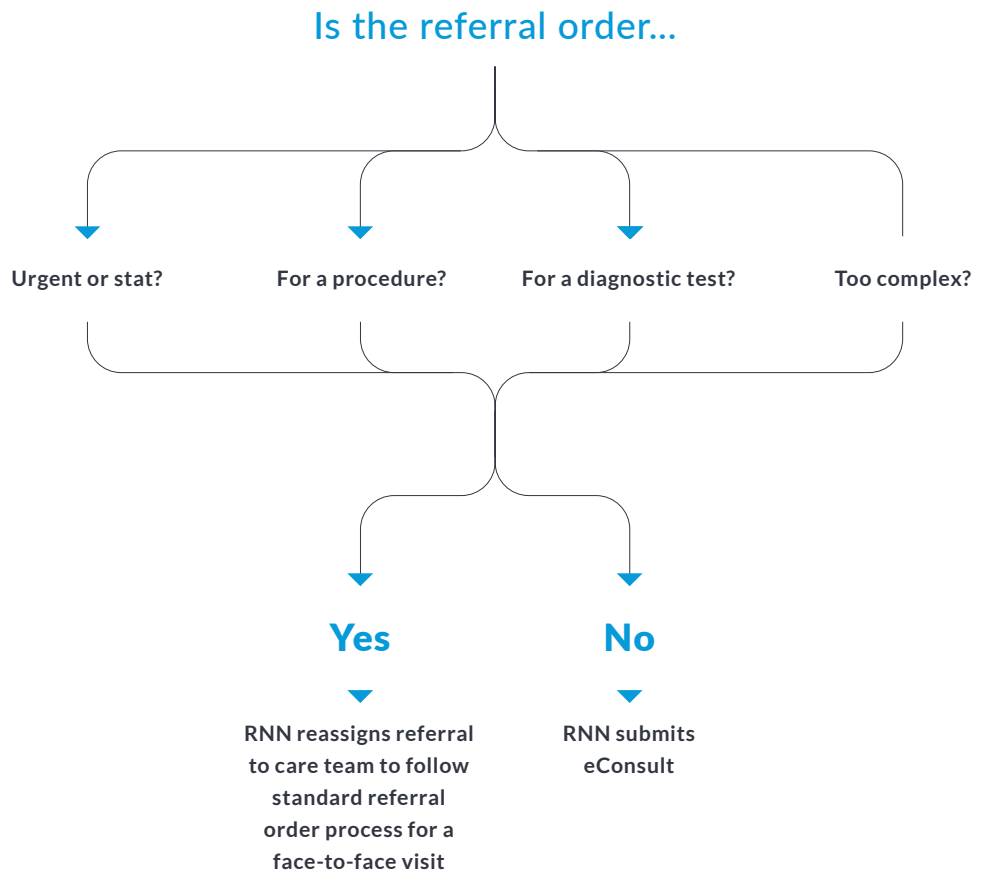
Simple. Efficient. Consistent.

With clinical routing, our nurses manage referrals and use standards pre-determined by your clinic to decide whether an eConsult should be done or whether a patient needs an in-person visit with a specialist.

We take the guesswork out of determining when an eConsult can be impactful to patient care and determining what diagnostics and clinical information should be included with the eConsult request.

## Simple routing criteria applied:

- ✓ Not urgent
- ✓ Not procedural
- ✓ Covered for this patient
- ✓ Any other clinic-specific criteria you would like to include



Appropriate cases are sent for eConsult; others are scheduled for F2F

## Routing of request

Your referral coordinator receives your referral request. If it meets the following criteria, an eConsult will be initiated in the AristaMD platform. If not, the appointment will be scheduled.

For more information or to request a demo, contact us at [info@aristamd.com](mailto:info@aristamd.com) or visit us at [www.aristamd.com](http://www.aristamd.com).